

# Improving Pipeline Spill Prevention, Preparedness & Response - Offshore

Theresa Bell, Minerals Management Service

Pacific States/British Columbia  
Oil Spill Task Force

April 24, 2007





MMS, part of the U.S. Department of the Interior, oversees 1.76 billion acres of the Outer Continental Shelf, managing offshore energy and minerals while protecting the human, marine, and coastal environments.



# Current Regulations Preventing Pipeline Spills



## **30 Code of Federal Regulations (CFR)**

PART 250--OIL AND GAS AND SULPHUR OPERATIONS  
IN THE OUTER CONTINENTAL SHELF—

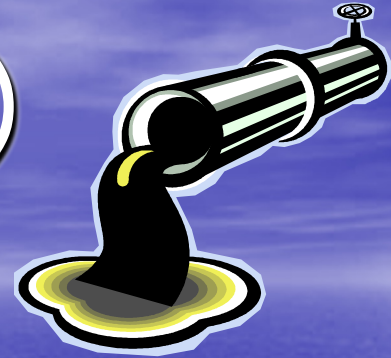
## **Subpart J--Pipelines and Pipeline Rights-of-Way**

### **30 CFR Sec. 250.1000 General requirements.**

(a) Pipelines and associated valves, flanges, and fittings shall be designed, installed, operated, maintained, and abandoned to provide safe and pollution-free transportation of fluids in a manner which does not unduly interfere with other uses in the Outer Continental Shelf (OCS).



# Current Regulations (con't.)



## **30 CFR Sec. 250.1004 Safety equipment requirements for DOI pipelines.**

- Incoming pipelines to a platform shall be equipped with a flow safety valve (FSV)
- Incoming pipelines boarding to a production platform shall be equipped with an automatic shutdown valve (SDV) immediately upon boarding the platform. The SDV shall be connected to the automatic- and remote-emergency shut-in systems.
- Departing pipelines...protected by high- and low-pressure sensors (PSHL) to directly or indirectly shut in all production facilities.
- The Regional Supervisor may require that oil pipelines be equipped with a metering system to provide a continuous volumetric comparison



# Current Regulations (con't.)



## **30 CFR Sec. 250.1005 Inspection requirements for DOI pipelines.**

Pipeline routes shall be inspected at time intervals and methods prescribed by the Regional Supervisor for indication of pipeline leakage.

**30 CFR Sec. 250.1016 Granting a pipeline right-of-way. (e)(1)** ...The Regional Supervisor may prescribe, as conditions to the right-of-way grant, stipulations necessary to protect human, marine, and coastal environments, life (including aquatic life), property, and mineral resources located on or adjacent to the right-of-way.



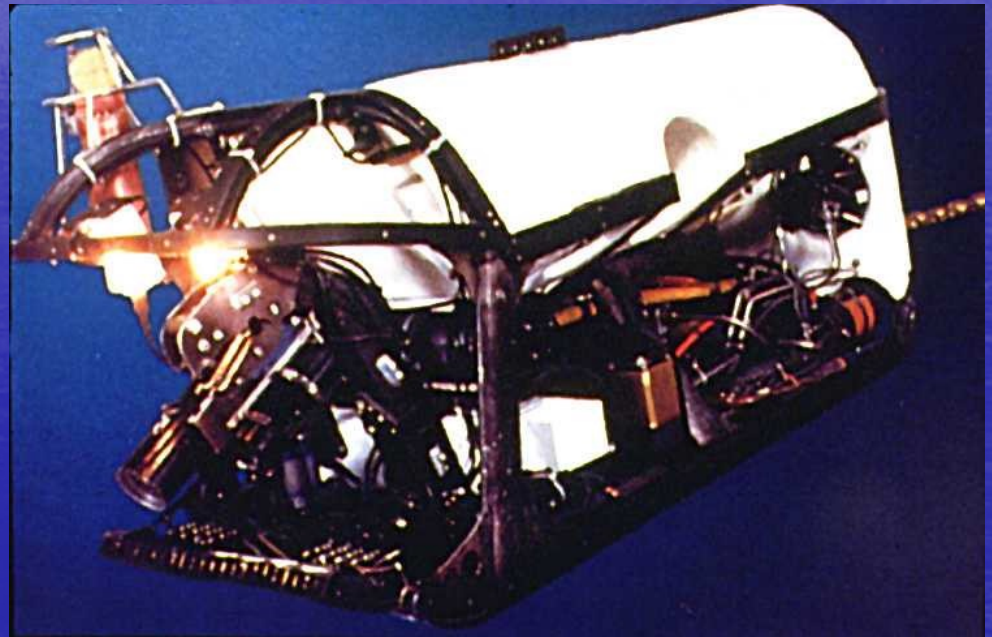
# Overview of Inspection Program

- In 1990, the MMS Pacific OCS Region pipeline inspection program was revised to include:
  - External and internal inspections every other alternating year
  - Cathodic Protection (CP) survey every year
  - Remediation plan must be submitted for safety or fishing hazard



# Type of Pipeline Inspections and Tools

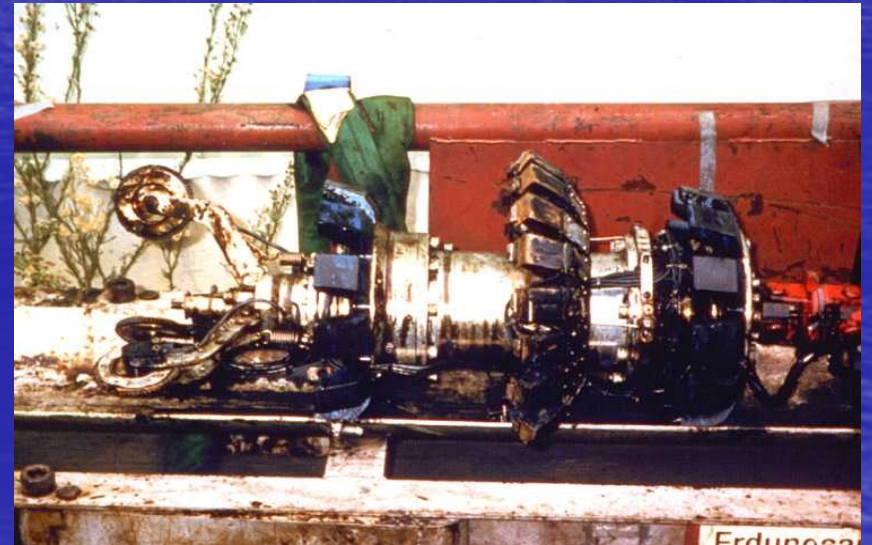
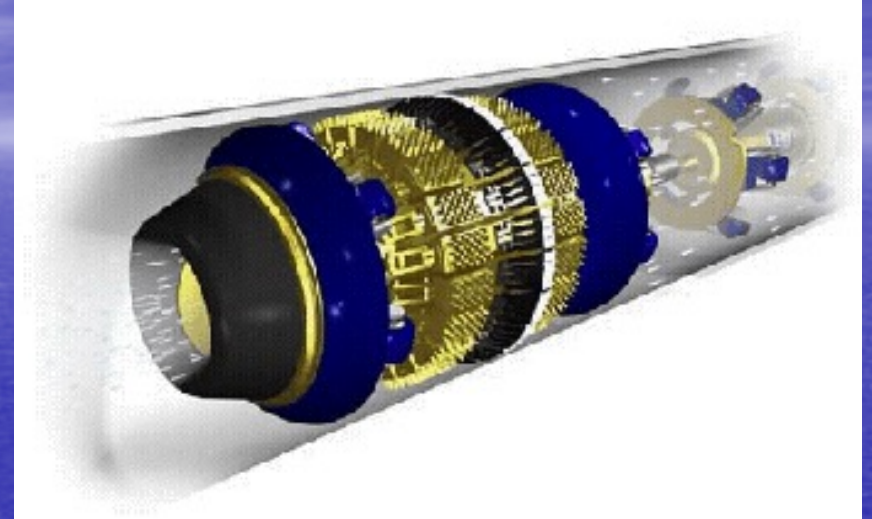
- External inspections conducted by remote operated vehicle or side scan sonar
- Used to detect potential external problems including spans, debris, coating damage





# Type of Pipeline Inspections and Tools

- Internal inspections conducted by intelligent pigs, a.k.a. "smart" pigs
- Used to detect wall loss (corrosion) and some dents





# Current Regulations – Preparedness and Response

## **30 Code of Federal Regulations (CFR)**

PART 254—OIL-SPILL RESPONSE  
REQUIREMENTS FOR FACILITIES LOCATED  
SEAWARD OF THE COAST LINE

30 CFR Section 254.1(a) If you are the owner or operator of an oil handling, storage, or transportation facility, and it is located seaward of the coast line, you must submit a spill-response plan to MMS for approval.



# Current Regulations – Preparedness and Response (con't.)

30 CFR 254 Subpart B Oil-Spill Response Plans for Outer Continental Shelf Facilities

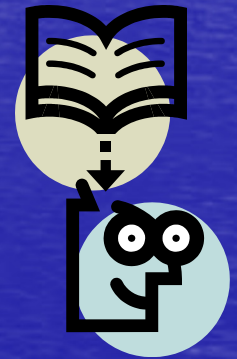
30 CFR 254 Subpart C Related Requirements for Outer Continental Shelf Facilities





# Current Regulations – Preparedness and Response (con't.)

- MMS coordinates the review of the response plan with the U.S. Coast Guard and affected State agencies
- MMS approves the plan
- Training of response personnel
- Oil Spill Exercises
- U.S. Coast Guard Federal On-Scene Coordinator





# Currently Re-Write Subpart J--Pipelines and Pipeline Rights-of-Way

## Headings of Interest

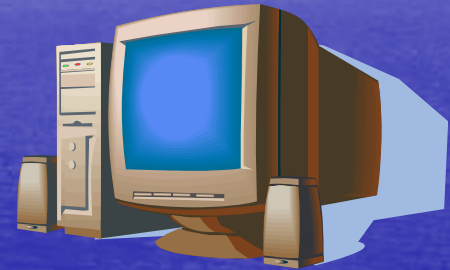
- Pipeline Pressure Testing
- Pipeline Safety Equipment
- Pipeline Leak Detection
- Pipeline Internal Corrosion Control and Flow Assurance
- Pipeline Operations and Maintenance
- Pipeline Surveying, Monitoring, and Inspection



# Websites

MMS Website

<http://www.mms.gov>



Regulations found at

<http://www.gpoaccess.gov>

<http://www.gpoaccess.gov/cfr/retrieve.html>

Search: title 30, section 250, subpart J